



LASER SURVEYS.

TOPOGRAPHICAL SURVEYS
MEASURED BUILDING SURVEYS
DRONE SURVEYS
3D SURVEY MODELS
UNDERGROUND SERVICES SURVEYS
PAS128 UTILITY DETECTION SURVEYS
DRAINAGE CONNECTIVITY SURVEYS
CCTV DRAINAGE CONDITION SURVEYS
UTILITY RECORDS SEARCH

CONTENTS

3 [WELCOME](#)

4 [ABOUT US](#)

5 [WHY LASER SURVEYS?](#)

6 LAND & BUILDING SURVEYS

7 [TOPOGRAPHICAL SURVEYS](#)

8 [MEASURED BUILDING SURVEYS](#)

9 [DRONE SURVEY](#)

11 [GPS SURVEYS](#)

12 3D SURVEY MODELS

14 UNDERGROUND SERVICES SURVEYS

15 [UNDERGROUND UTILITY DETECTION](#)

16 [PAS128 UTILITY DETECTION](#)

17 [DRAINAGE CONNECTIVITY SURVEYS](#)

18 [CCTV DRAINAGE CONDITION SURVEYS](#)

19 [GROUND PENETRATING RADAR \(GPR\)](#)

20 [UTILITY RECORDS SEARCH](#)

21 [SECTORS WE SERVE](#)

23 [MEET THE TEAM](#)

24 [CONTACT](#)

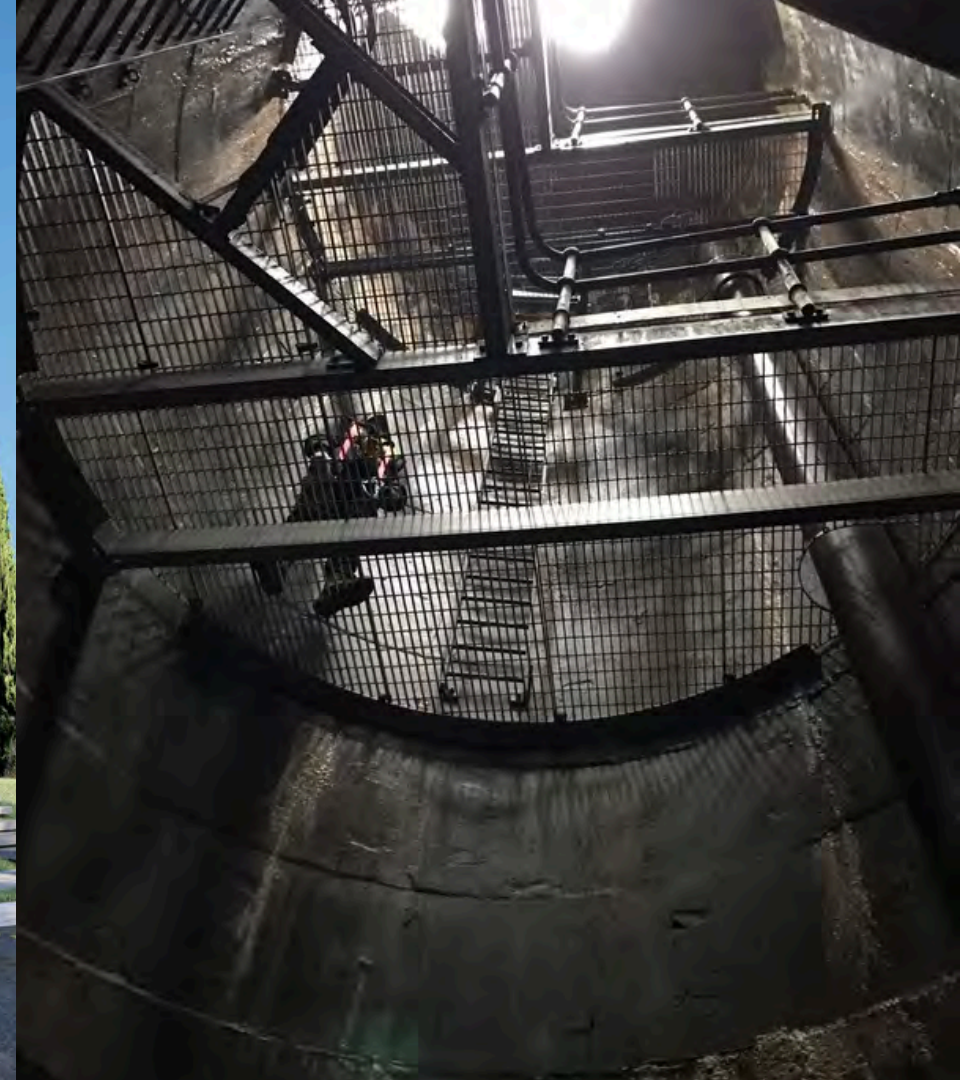
WELCOME TO LASER SURVEYS

[MORE INFO >](#)

Laser Surveys Ltd is a leading national provider of surveying services, including Land Surveys, Measured Building Surveys, Underground Services Surveys, CCTV Drainage Surveys & more. Established over 45 years ago, we have grown to become one of the largest independent survey companies in the UK.

From our offices in Worcestershire & Essex, our team of 50 dedicated employees leverage extensive experience to manage all aspects of our services in-house; from on-site data collection to CAD drafting & 3D modelling. Our commitment to delivering detailed, accurate survey data, & providing exceptional client service, has established us as a trusted industry leader.

In January 2023, we proudly transitioned to an Employee Ownership Trust (EOT). This change has not only empowered our employees to own and manage the company but also enhanced our operational & value-driven foundations, under a newly appointed board of directors. As stakeholders in Laser Surveys' success, every employee now shares a deep commitment to our collective purpose & decision-making processes.



ABOUT US

ABOUT US

A B O U T U S

A photograph of a surveying instrument, specifically a total station, mounted on a black tripod. The instrument is yellow and blue, with a 'X7' label. In the background, a large steel truss bridge spans across the frame under a blue sky with scattered white clouds. The foreground shows a body of water and some distant structures.

Vision

Commitment

- **Quality & Accuracy:** Precision in every survey. Working to technical specifications provided by professional bodies & our trade associations: inc. RICS, ICE, BSI, PAS128 & more.
- **Professionalism:** Upholding the highest standards of professionalism in all interactions & services provided.
- **Innovation:** Investing in cutting-edge technology & innovative methodologies, ensuring efficient, accurate & reliable surveying services.
- **Employee Development:** Continuous learning & development, aiming to upskill & empower our in-house surveyors.
- **Transparent Pricing:** Quick clear quotations, offering a breakdown of costs with no hidden fees or surprises.
- **Prompt Service:** Once you accept our quotation, we will always strive for a rapid turnaround & adherence to agreed-upon timescales.
- **Dedicated Support:** Our in-house team collaborates closely with clients to ensure smooth project fulfilment.
- **High Quality Deliverables:** We ensure that our deliverables meet specified standards, with thorough accuracy & quality checks.
- **Trusted Expertise:** Count on our deep knowledge & expertise in our services & products, ensuring quality results every time.

WHY LASER SURVEYS?



1

In-House

At Laser Surveys Limited, we believe in the importance of using our own professional surveyors.

We know that the best results come from the direct involvement of our skilled team members, ensuring high-quality work from site tasks to office processing & 3D modelling.

2

Nationwide

Our reach extends nationwide, offering a comprehensive range of services covering everything from aerial surveys to underground mapping.

This means you can rely on us no matter where your project is located.

3

End-to-End

From initial data collection to final deliverables, we ensure a seamless process & consistent excellence throughout.

Our quoting team work directly with operations & our surveyors, to ensure quality communication from the office to site and onto our clients.

A B O U T U S

LAND & BUILDING SURVEYS

Accurate building & land surveys for your project

- Topographical Surveys
- Measured Building Surveys
- Drone Survey
- GPS Surveys

Whether you're embarking on a new construction project, renovating an existing structure, or simply require accurate measurements for property management purposes, we have the expertise & resources to ensure your project runs smoothly and efficiently.

We use the latest Laser scanning equipment to capture vast amounts of high-quality data which allows us to provide highly detailed outputs in 2D & 3D.

[MORE INFO >](#)

Deliverables: Detailed 2D drawings (CAD and or PDF) | 3D models (BIM ready) LoD 1-4 | 360 photographic walkthroughs | Area measurement reports | Point cloud data | Drone data & more

LAND & BUILDING
SURVEYS





LAND & BUILDING SURVEYS

TOPOGRAPHICAL SURVEYS

Mapping landscapes with precision

Our topographical surveys provide an accurate digital plan representation of the man-made & natural environment, capturing vital information such as surface features, physical boundary details, & elevation changes to your individual specifications, presenting them on a scaled survey drawing.

[MORE INFO >](#)

MEASURED BUILDING SURVEYS

Accurate Building Surveys

We offer measured building surveys in London & across the rest of the UK, priding ourselves on utilising the latest in laser scanning technology. This approach allows our measured survey teams to capture data efficiently with exceptional accuracy. Opting for our services means reduced site time & minimal disruption to on-site activities, establishing us as the go-to measured survey company for fast & reliable results.

Deliverables

Our deliverables can include detailed floor plans, elevations, sections, roof plans, 3D survey models, area measurement & more.

[MORE INFO >](#)



DRONE / UAV SURVEYS

LAND & BUILDING
SURVEYS

Cutting-Edge Aerial Mapping

Using the latest drones, we are capable of remote data capture in areas previously inaccessible due to logistical or H&S reasons, allowing us to provide an even more comprehensive deliverable/dataset to our clients.

With our in-house CAA qualified drone survey operators, we can cover the whole of the UK conducting drone surveys on both building & terrestrial projects, capturing high accuracy levels of data efficiently, effectively & most importantly, safely.



MORE INFO >

DRONE / UAV SURVEY

01

Drone Capture with Topographical Overlay

There's significant potential in leveraging drone image capture to enhance traditional survey methods.

For instance, here's a topographical survey of a brownfield site overlaid on UAV imagery. The survey includes adjacent footpaths and accurately calculates volumes of earth stockpiles onsite.

[MORE INFO >](#)

02

Point Clouds direct from Drone Capture

Using a drone derived point cloud can provide a cost-effective solution covering a vast area with a rapid turnaround. This offers another solution to our on-site survey services for both large & small projects. It can be particularly useful for adding roof detail that would otherwise be impossible to see from ground level.



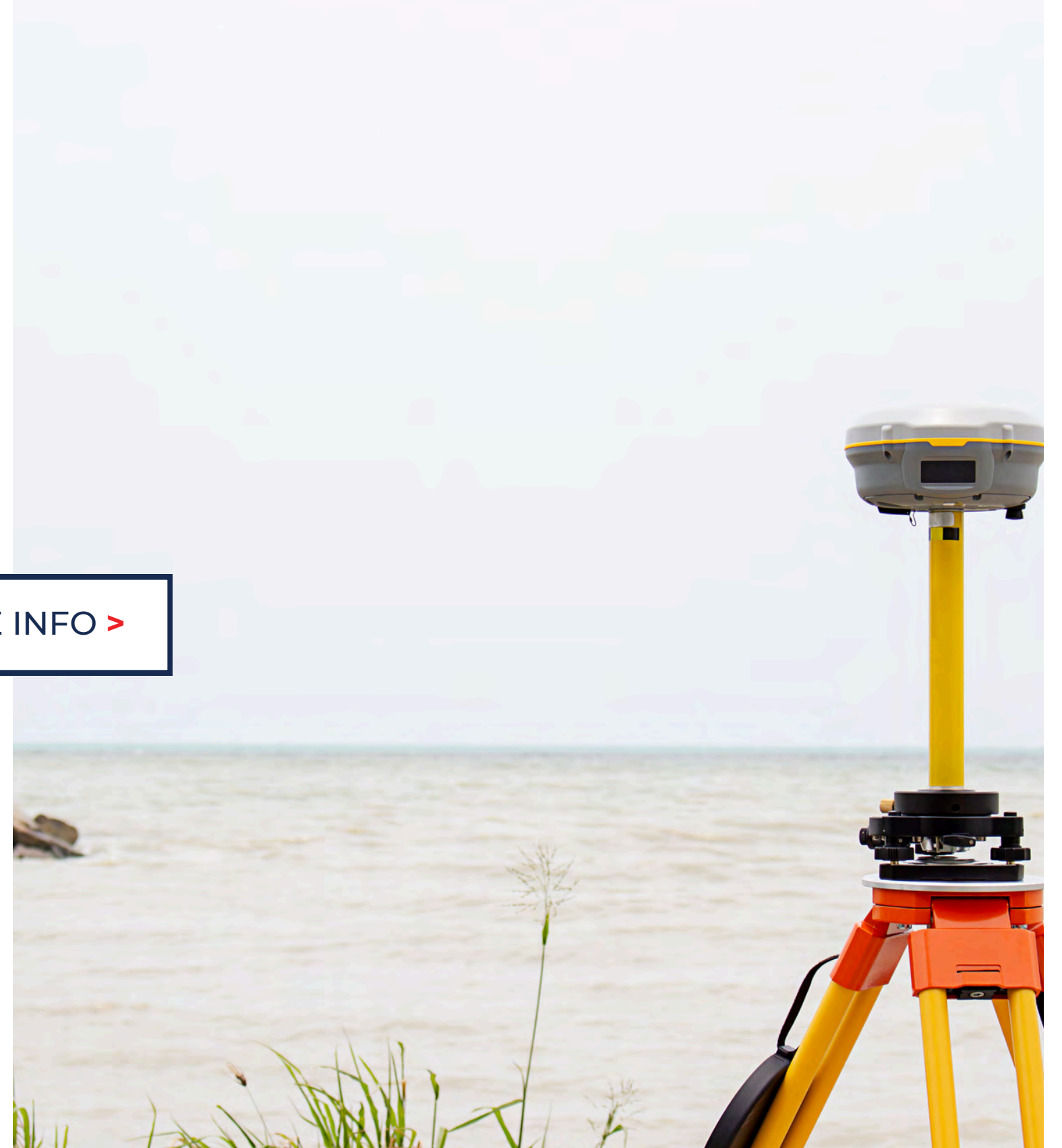
GPS SURVEYS

Location Data

Global Positioning System (or GPS) enables the positioning of any point in a global framework through observations to a network of satellites.

Normally a tool used in topographical land survey services to control the results to the national grid, the high level of accuracy & speed of use of the GPS Total Station allows “real-time” surveying from our surveying company. The system can be mounted onto an all-terrain Vehicle for rapid data collection of green-field or similar rural topographical data.

[MORE INFO >](#)



LAND & BUILDING
SURVEYS

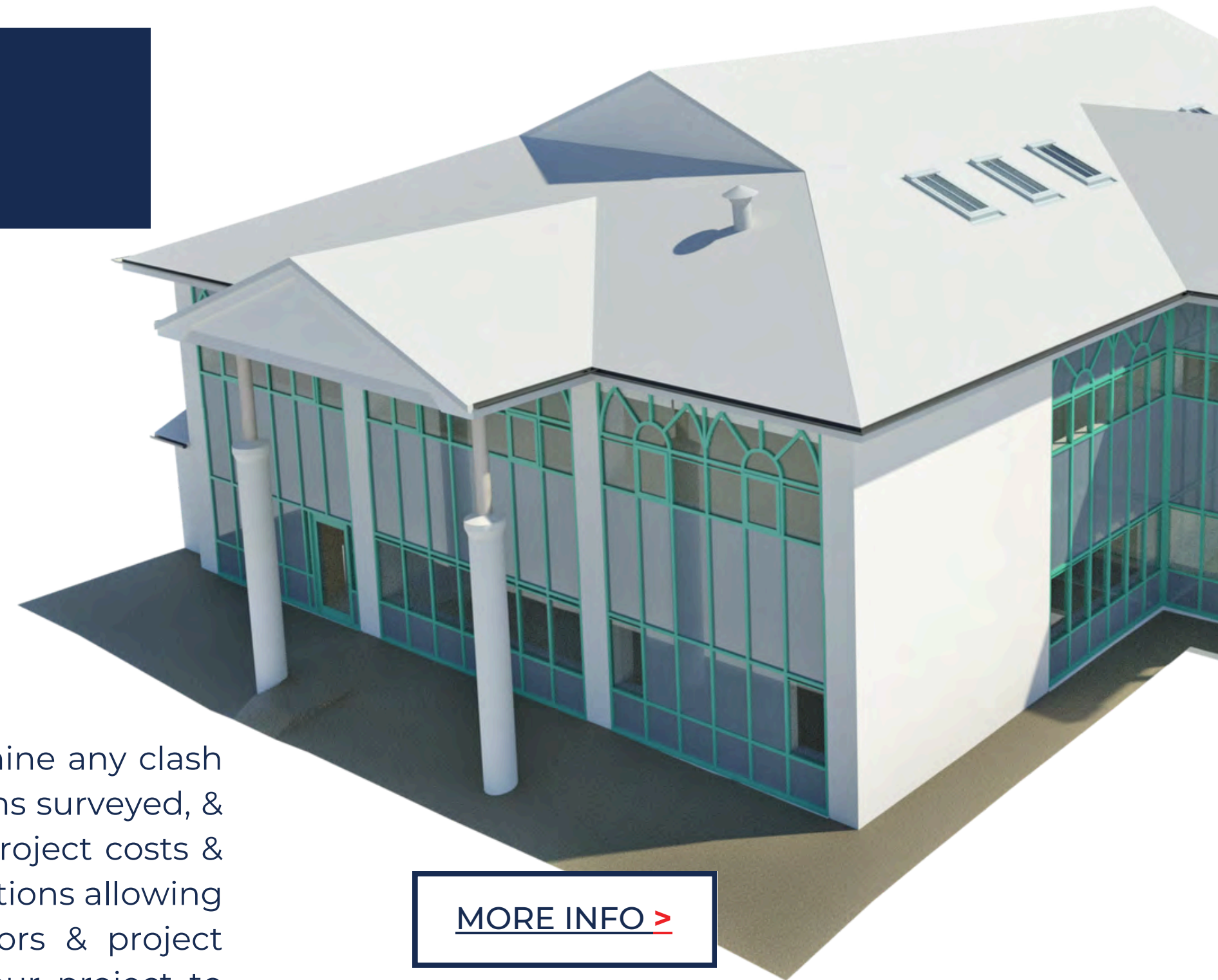
3D SURVEY MODELS

BIM ready Survey models

Start your project with an accurate BIM ready survey model, ensuring the correct criteria & level of detail for every aspect of your project by choosing our expert, in-house team. Choosing to begin your project in 3D with us ensures assembly of a comprehensive survey model with minimal on-site disturbance due to our unobtrusive survey methods.

Our highly accurate & realistic models will enable you to better determine any clash detection or other issues between the existing elements & site conditions surveyed, & your new design, at an early point in the project, leading to reduced project costs & timescales overall. They will also form a brilliant base for project visualisations allowing effective communication of the design intent with clients, contractors & project stakeholders. Not only this but our BIM-ready survey models help your project to comply with BIM Level 2 requirements, from the very start.

Models can be provided in Autodesk® Revit® and IFC formats, or for an additional fee in 3D AutoCAD®. Additionally renders & videos of the project can be provided.



[MORE INFO >](#)

3 D M O D E L L I N G

3D SURVEY MODELS

3 D M O D E L L I N G

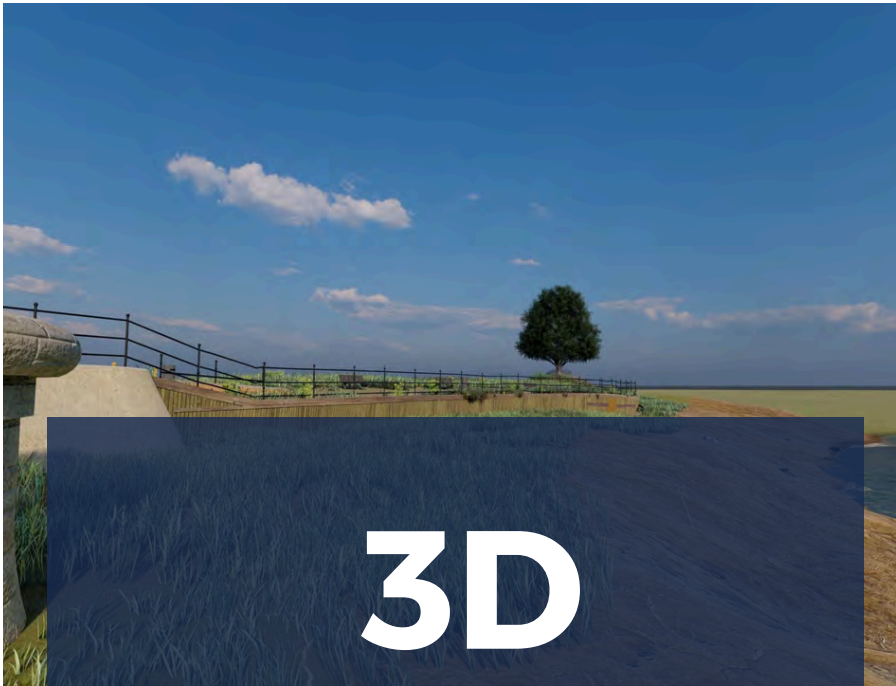


3D

Building Models

3D survey models of existing buildings and structures. These can be anything from disused barns to working office blocks.

We offer a range of detail levels so you can pick the right one for your project, from massing to high accurate bespoke modelling.

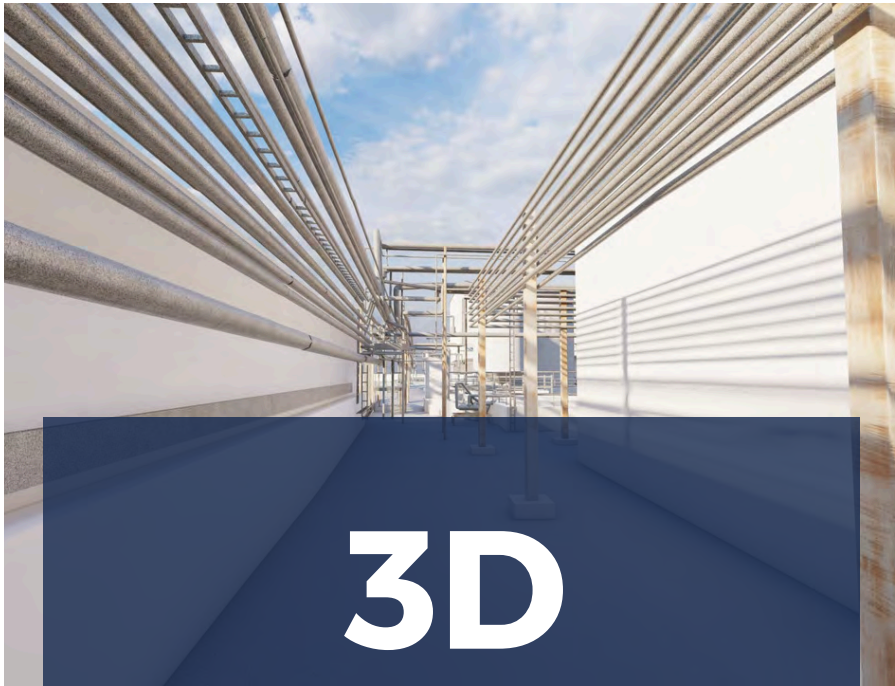


3D

Site Models

3D site models of any site area. This could be a simple back garden or a complex development with numerous features that require co-ordinating.

We offer a range of detail levels to suit your project requirements.

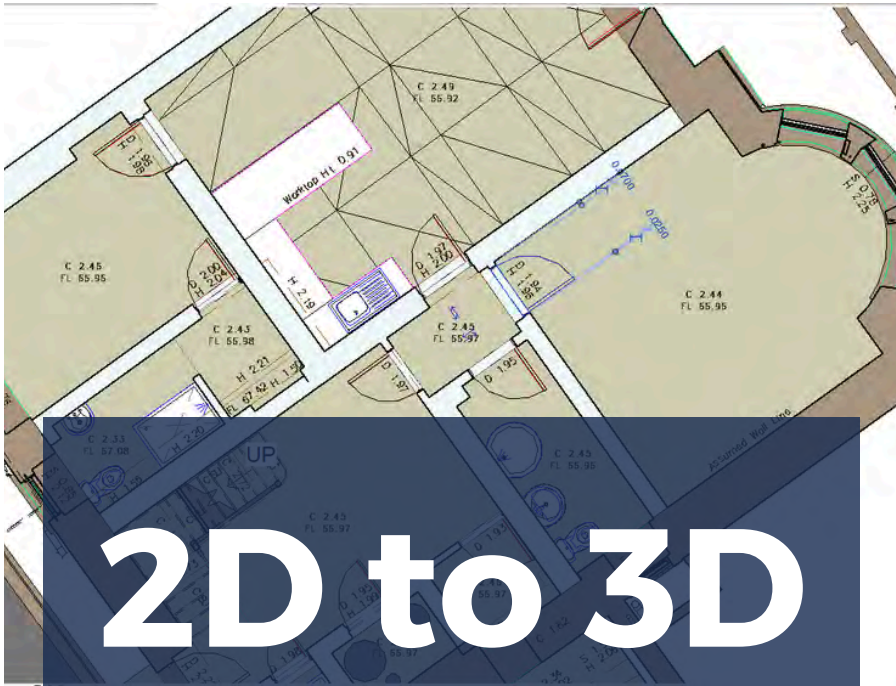


3D

Service Models

3D services, whether above or below ground, are detected by our surveyors using a number of methods.

We then convert these findings into a 3D model for you to use within your project. These are particularly useful for clash detection on busy sites.



2D to 3D

Conversion

Existing 2D drawings are converted into 3D Revit models. If additional survey data is required, our own survey teams can be mobilised.

Engineering drawings are converted into a 3D Revit model for spatial coordination with other consultants.

UNDERGROUND SURVEYS

Comprehensive Underground Survey Solutions

- Underground Utility Detection
- PAS128 Utility Detection
- Drainage Connectivity Surveys
- CCTV Drainage Condition Surveys
- Ground Penetrating Radar (GPR)
- Utility Records search

Our Underground Surveys combine advanced underground utility detection methods such as Electromagnetic Location (EML), Ground Penetrating Radar (GPR), and CCTV Inspection Systems to thoroughly investigate drainage networks & sewer systems. By integrating this information with existing site data or OS digital data, we compile a comprehensive & consolidated dataset for our clients.

In addition to on-site investigations, we offer a range of desktop studies, including utility record searches & contaminated land reports. These studies provide crucial insights to help in planning & decision-making processes.

[MORE INFO >](#)



UNDERGROUND
SURVEYS

UNDERGROUND SURVEYS

UNDERGROUND UTILITY DETECTION SURVEYS

Accurate location of subsurface utilities

Using Electromagnetic Location (EML) and Ground Penetrating Radar (GPR) equipment we are able to accurately locate sub-surface utilities. This can either be 2D or 3D data superimposed onto survey base data, either client-supplied or produced in-house.

[MORE INFO >](#)



PAS128 UTILITY DETECTION

British Standards Institution (BSI)
**PAS 128:2022 is the current
specification for underground
utility detection, verification, &
location.**



Type D

This is a prerequisite for all other survey types & is a 'desktop study' which involves contacting all known asset holders in the area & collecting all available record information.

Type C

This follows on from the desktop study with a surveyor attending site & conducting visual inspections to identify physical features that support the existence of utilities within the survey area.

Type B

This includes a physical site investigation, detecting utilities with two methods of detection namely Electromagnetic Location (EML) & Ground Penetrating Radar (GPR).

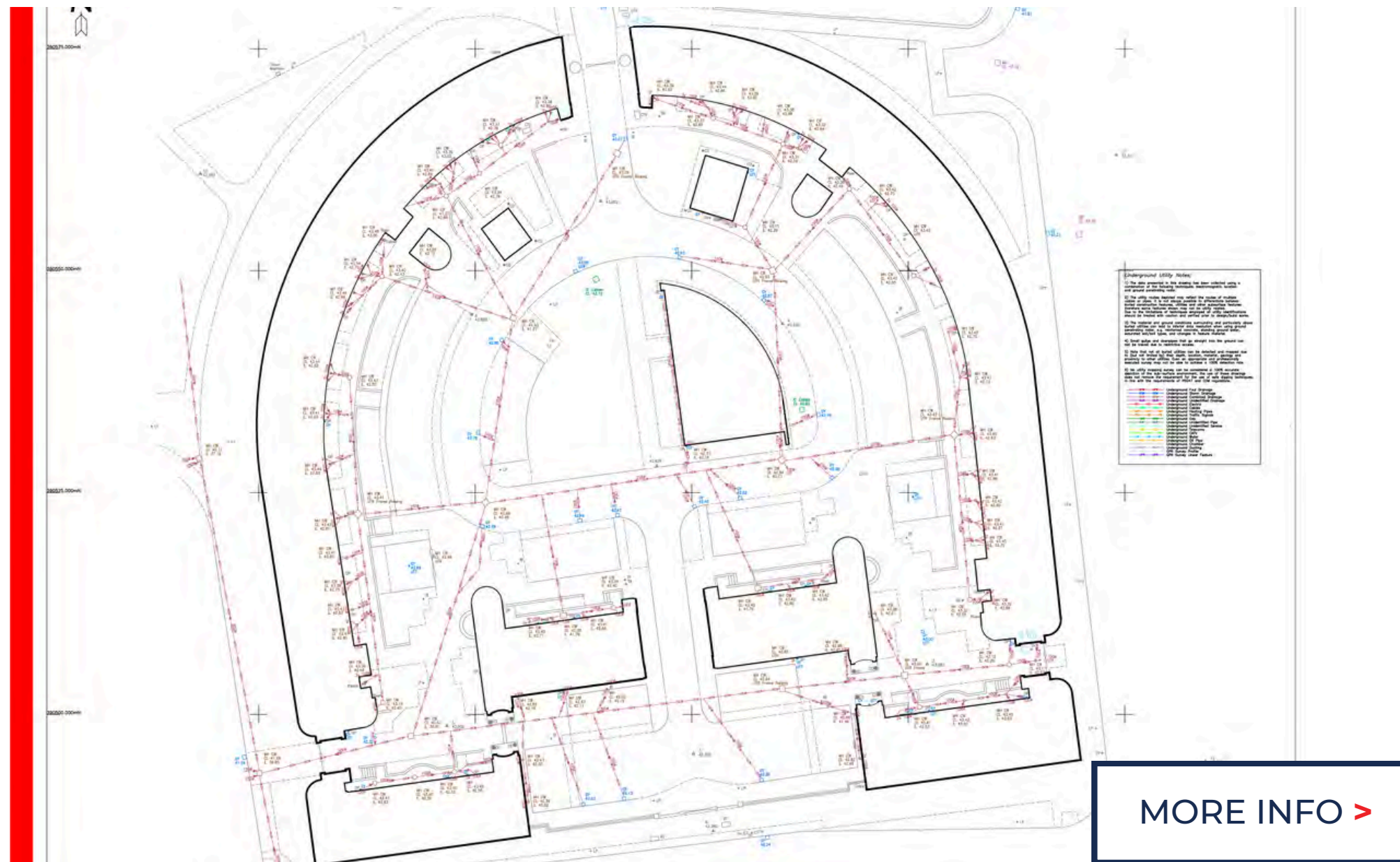


Type A

Site verification survey to provide absolute certainty that the utilities exist. This involves excavation & visible inspection.

[MORE INFO >](#)

DRAINAGE CONNECTIVITY SURVEYS



[MORE INFO >](#)

Accurate Scaled Drainage plans

Using Electromagnetic Location (EML) methods, we can offer accurate tracing of drainage layout & connectivity, ensuring a comprehensive understanding of your drainage network. With industry-standard deliverables we'll provide you with a detailed drainage layout plan in CAD & PDF formats. This data will deliver key information such as manhole locations, pipe sizes, drainage connectivity, flow directions, as well as cover & invert levels.

Here at Laser Surveys, we are equally at home mapping domestic drainage systems, commercial & industrial projects as well as more complex culvert or sewer entry work. Our team will supply you with full working drawings tailored to your specific requirements, enabling you to undertake your drainage projects with confidence.

CCTV DRAINAGE SURVEYS



[MORE INFO >](#)

LAND AND BUILDING
SURVEYS

Comprehensive Drainage Surveys =====

Traditionally, this specialised service was carried out by drainage companies, necessitating architects, engineers, & developers to handle it as a separate contract. However, by integrating this service you can now access all the necessary drainage information without the hassle of managing multiple contracts, ensuring a smoother, more efficient experience for your projects.

In addition to supplying Condition Reports & CCTV footage, we take pride in delivering a fully coordinated, accurate drainage layout plan available in both AutoCAD (.dwg) and PDF formats.

For complex sites, we offer a full consultancy package, handling all necessary arrangements including traffic management, confined space entry & jetting facilities.

UNDERGROUND SURVEYS

GROUND PENETRATING RADAR (GPR) SURVEYS

Accurate Underground Mapping from the surface

Ground Penetrating Radar Surveying is a non-intrusive detection method capable of accurately locating a wide array of subsurface features. Our advanced GPR surveys not only help to detect both metallic & non-metallic objects but also provides critical data on their location & depth.

This essential information aids in site analysis, ensuring planning & safe excavation practices.

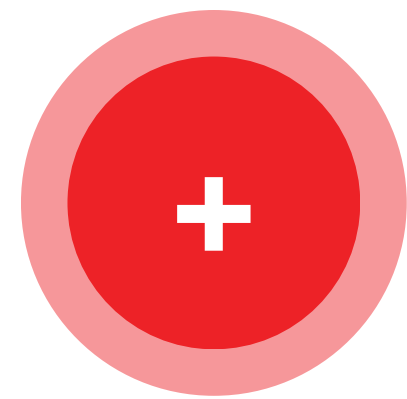
[MORE INFO >](#)



UTILITY RECORD SEARCHES

To ensure the highest standards, our utility record searches are performed by seasoned industry experts, & are fully compliant with PAS128 requirements. We also offer a variety of cost-effective options & flexible turnaround times to accommodate any project size.

[MORE INFO >](#)

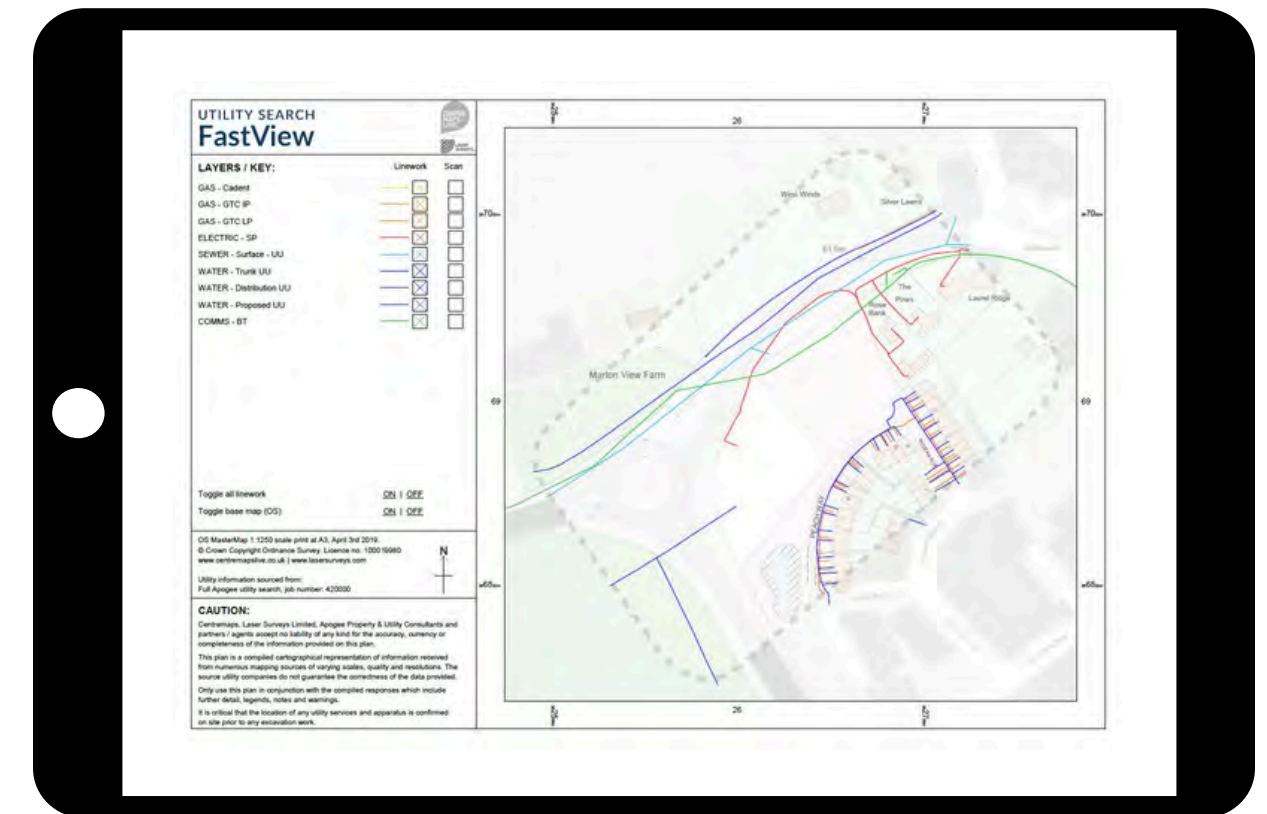


Enhance the results of your Utility Search Report with **FastView**

Quickly & intelligently identify potential utilities on site with the **all-in-one layered PDF or CAD file**.

Layers can be independently isolated to allow inspection of individual utilities within the PDF.

Utility information is overlaid on the latest OS Mastermap with OS Zoomstack to provide an up to date base map for context.



SECTORS WE SERVE



01

Commercial

We are dedicated to meeting the dynamic needs of the commercial sector. Our experienced team of surveyors provide detailed & accurate surveys of land, buildings & underground utilities to suit all commercial projects.

02

Residential

We work with homeowners for individual projects as well as on large multi-property projects for building companies & housing associations.

03

Public Sector

Working both directly and through 3rd parties we have extensive experience of numerous types of public sector institutions and the challenges associated with them..

04

Healthcare

We understand the importance of access & time constraints. With streamlined data capture, we are aptly prepared to overcome these challenges & deliver high-quality survey data, efficiently.

SECTORS WE SERVE



05

Retail

We have proven experience compiling large scale data capture, enabling our clients to efficiently streamline their refurbishment & store planning.

06

Hospitality & Leisure

Our services cater to a wide range of project sizes, from one-off surveys for smaller ventures to comprehensive packages tailored for larger projects.

07

Education

We possess the necessary enhanced clearances and are adept at navigating the specific time & access constraints typical of educational facilities.

08

Property Development

We have partnered with housing developers across the UK for many years, offering a full range of survey services that span the entire lifecycle of real estate projects.

MEET OUR TEAM



1

Matt Hodgkiss

Director



2

Daniel Jenkins

Director



3

Chris Wilds

Director



4

Joe Moverley

Director



5

Hannah Macmillan

3D Modelling
Manager



6

Dan Jenkins

Utility Survey
Manager

CONTACT US

We look forward to working with you



Phone : Worcs 01886 833173
London 01277 821555



Email : worcester@lasersurveys.com
london@lasersurveys.com



Website : www.lasersurveys.com

CONTACT US HERE >



C O N T A C T

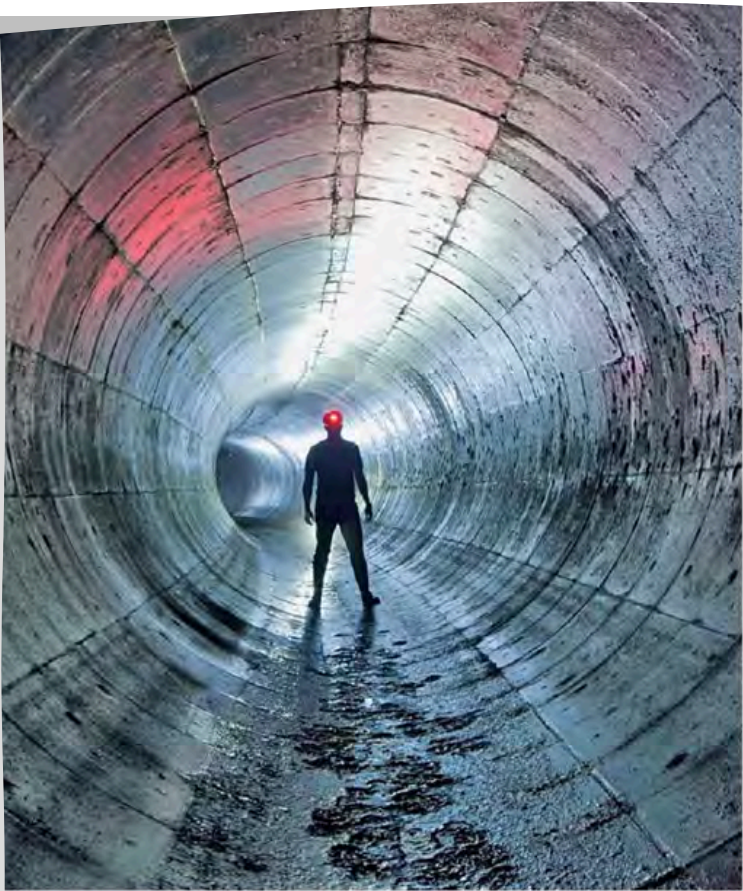
UNDERGROUND SURVEYS

Comprehensive Underground Survey Solutions

- Underground Utility Detection
- PAS128 Utility Detection
- Drainage Connectivity Surveys
- CCTV Drainage Condition Surveys
- Ground Penetrating Radar (GPR)
- Utility Records search

Our Underground Surveys combine advanced underground utility detection methods such as Electromagnetic Location (EML), Ground Penetrating Radar (GPR), and CCTV Inspection Systems to thoroughly investigate drainage networks and sewer systems. By integrating this information with existing site data or OS digital data, we compile a comprehensive and consolidated dataset for our clients.

In addition to on-site investigations, we offer a range of desktop studies, including utility record searches and contaminated land reports. These studies provide crucial insights and help in planning and decision-making processes.



UNDERGROUND
SURVEYS

UNDERGROUND SURVEYS

Comprehensive Underground Survey Solutions

- Underground Utility Detection
- PAS128 Utility Detection
- Drainage Connectivity Surveys
- CCTV Drainage Condition Surveys
- Ground Penetrating Radar (GPR)
- Utility Records search

Our Underground Surveys combine advanced underground utility detection methods such as Electromagnetic Location (EML), Ground Penetrating Radar (GPR), and CCTV Inspection Systems to thoroughly investigate drainage networks and sewer systems. By integrating this information with existing site data or OS digital data, we compile a comprehensive and consolidated dataset for our clients.

In addition to on-site investigations, we offer a range of desktop studies, including utility record searches and contaminated land reports. These studies provide crucial insights and help in planning and decision-making processes.

MORE INFO >



UNDERGROUND
SURVEYS